

dupageartleague

NEWSLETTER

NOT-FOR-PROFIT SCHOOL & GALLERY—218 W FRONT STREET-WHEATON IL 60187
FEBRUARY 2016



Diana Mitchell

President's Letter

Dear DPAL Members,

Several positions for new board members need to be filled. Among those are the following: President, VP of Education, VP of Exhibits, VP of Office Management, and VP of Finance. If you are willing to tackle any of these jobs, please apply. You can find additional information, job descriptions, and application process as you read further in the newsletter. Tanya Berley, President Emeritus, is chair of the committee and Sally Hines, Vice-President of Publicity is the other board committee member. Three League members who are not on the board round out the committee as per the DPAL By-Laws, revised in December 2015.

I think most of us will agree we love our building and location in downtown Wheaton. It is a second home to more than a few. Unfortunately, when a building approaches its 100th birthday (built in 1928) it needs more than cosmetic attention. We are sorry if closing for some preliminary and temporary repairs was an inconvenience. Our treasurer Kandice Husarik has established a savings account for donations dedicated to roof and structure repair. An anonymous donor has pledged to match our roof fund-raising efforts up to \$20,000. This donation will be a huge help, and just as soon as we have sufficient money set aside, permanent repair will be scheduled. This project will include tear off of old roof(s), installation of a new one, masonry work, tuck pointing, and correcting any other problem that may exist. Alice Kennedy, VP Building and Grounds, who had a career in facilities management, has been invaluable in getting bids, finding, and dealing with reputable contractors. She has worked with many area vendors/contractors and the city of Wheaton. Thank you, Alice! .

Think about this. As of January 14, 2016, we had 396 members. We will have over 400 shortly. Now if each of the 400 members pledged to donate \$20 a month to the League for a year, we would have \$96,000 from members plus \$20,000 from our anonymous donor.... enough to address all the current issues plus monies to be left in a building fund for our facility. We need help from you, our members, and the community.

Reminder: We have an Acrylic Landscape Painting with Impact Workshop with William Worcester on Feb. 6 and 7. (two full days for \$175.00.) Learn everything you need to know to paint unforgettable, dynamic landscapes. See the class schedule for details. Sign up soon.

On a sad note, we just learned of Carol Gorman's passing. A long time member, Carol was a wonderful human being and artist. She won many awards for her soft pastel and oil pastel paintings. We will miss her.

Diana Mitchell, President

DPAL Board 2015-2016

President: Diana Mitchell
Secretary Carol Kincaid
Treasurer: Kandice Husarik
VP Activities & Community Exhibits
Sandra Wille
VP Building & Grounds: Alice Kennedy
VP Education: Tanya Berley
VP Exhibits: Kay Wahlgren
VP Finance: Robert Wahlgren
VP Membership: Yvonne Thompson
VP Office Management: Liesl Mann
VP Publicity & Promotions: Sally Hines

DPAL Newsletter

Newsletter Editor: Ann Johnson
E-mail: dpalnewsletter@gmail.com

Articles and pieces are due by the 15th of the month.
Articles preferred via e-mail, (word documents) / photos pdf format or put in the Newsletter drawer at the league. Please put submissions on **FULL** pieces of paper . Thanks.

WHAT WE LEARNED From Your Surveys

A big thank you to everyone who took the time to fill out our recent survey. The response was great. We received 83 surveys from 61 members, 19 non-members and a few who didn't fill in that box. The board reviewed a compilation of the answers and spent a good deal of time discussing the results.

Here's what we learned:

- Overall people are really happy with the classes. They like the times, the length, the number of classes in a session and they called out several teachers who they believe are exceptional.
- There were some interesting suggestions for classes and workshops which have been forwarded to the people in charge of those areas
- There was not a great interest in certification programs.
- There were some excellent ideas around how to attract new members and be more welcoming.
- The most common reason people don't enter shows is they don't feel their art is good enough. Some say they plan to enter, just not yet. Distance and time also come into play for some.
- Target customers generally are seen as people with free time during the day, people interested in learning or expanding their artistic skills, and young people who like to make art. There were lots of ideas on how to reach these folks as well.
- When it came to the facilities there were a couple of things that stood out. Making the bathrooms more comfortable for seniors, more seating in the galleries, better spaces to store equipment in classrooms, better lighting, Video/internet access in classrooms and possibly a TV and DVD to use in classes
- In terms of activities there was a big interest in field trips (25), more social activities (16) and informal critiques (16). Small interest groups (13) and a group that watches videos (12) came in next.

The idea behind the survey was for the board to get your input as we put together a long term plan for the league. It more than served its purpose!

BOARD NOTES: Carol Kincaid

Our Gift Gallery now has a much brighter look with its new color and it certainly looks inviting. Thanks to all who painted and did all the other work to beautify the area.

In February, we will see Gallery Two hosting the art work of many of our area art teachers. Their reception will be Friday February 5th and we hope many league members will attend.

Even with our cold winter temperatures, our adult classes are doing really well. In fact, Ellen Rottsolk has 5 classes with 4 of them at full capacity. Our Saturday Life Drawing and Painting workshop which now meets twice a month will have a new coordinator. Jessica Breed, who had been the coordinator, has found a replacement for herself.

Sally Hines who is on the nominating committee is looking for members who would like to be on the board. She has compiled a letter which will be sent to all that briefly describes the duties of each position and hopes that many of you will be willing to put yourself forth for a position. The positions up for election this year are: V.P.s of: Finance, Education, Exhibits, Office Management and the position of President. Please, too, if you know of some league member who would be perfect for a position, let Sally or the nominating committee know.

Yuletide Treasures had another successful year even though some of its regular vendor did not participate as in prior years. Yvonne Thompson was happy to say that Yuletide Treasures grossed \$11,639.20 for the year and that was very favorable considering we had one less week in 2015, compared to 2014, in which to sell.

Sandy Willie is pleased to say that we have added the Wheaton Library to our list of places to display member artwork. We will be there on a bimonthly basis and right now Kandice Husarik's work is hanging there. Sandy is also looking for some volunteers to help her manage some of the other places in which we are now exhibiting.

Financially, according to our treasurer, Kandice Husarik, we are right on target with our normal expenditures and income. Of course, our major roof problems are another thing all together, but our "Raise the Roof" project is progressing and a fund raising plan of action is being created. There will be more news about this soon.

Finally, it was decided to close the art league for a few days, January 15th through January 19th, to take care of some roof related issues.

MEMBERSHIP NEWS Yvonne Thompson , VP Membership
dupage_art_league@sbcglobal.net 630-966-9616

By the time you read this I hope the printed version of the membership rosters will be ready for your collection from the front desk staffers. They are labeled, so please notify us if your address or phone numbers need updating. Also please ask the staffer to check to see that we have the correct email address on file for you as I will email a pdf copy to your email address;

Family memberships only get one printed copy.

You will notice the last two pages have all the Gallery 1 show titles for the year, listed for your convenience.

YULETIDE TREASURES.....FINAL FIGURES!

Well here we are, the totals are in and you'll see there are a couple of ways to look at the results. The bottom line is Yuletide Treasures took in \$11,639.20. This was broken down into \$10,734.20 in sales of items and \$905 sold in gift certificates.

Now comparing this to last years show figures is where it gets interesting. Last year the show was longer by a week, but if you take the same dates as this year you find we exceeded last year figures by almost \$1000.00. If you compare Yuletide Treasures 2014 to this year the total was down by only \$130.80!

I am very pleased with these figures!

Here is the break down:

	11/2/15- 12/25/15	11/2/14 -12/25/14	10/27/14 - 12/25/14
Yuletide sales	\$10,734.20	\$9849.90	\$11010.00
Gift certificates	\$905	\$760	\$760
Total	\$11,639.20	\$10,609.90	\$11770.00

**Our top 5 highest sellers were Sue Dix, Sue Iacolvelli, Liesl Mann, Sandy McLain and Yvonne Thompson. Congratulations to everyone!*

ARTISAN AFTERNOON: February 17th, 2-3:30 pm

Education News Tanya Berley—

We want to thank you for supporting the classes we offer, many are at full capacity and some have waiting lists, so 2016 has gotten off to a very good start. You can preregister for any class so you don't lose a spot in your favorite class.

We have a new coordinator for Saturday Life Drawing, Teresa Zawitkowska. She comes to us highly recommended by present coordinator Jessica Breed, "Teresa has lots of experience, is upbeat, welcoming and knowledgeable. She is also presently working at Elmhurst art museum." Plan to drop by on the 2nd or 4th Saturday afternoon each month to work from a live model.

There is still time to enroll in our Feb. 6,7 workshop with William Worcester to learn more about landscape painting in acrylics with impact.

As always, drop me a note at the League if you have suggestions for classes or improvements. We will do our best to follow up on them. Include your name so we can respond.

Come in out of the cold, meet some new friends and learn more about making art by taking one of our classes.

Inviting Candidates

As in past years The DuPage Art League will vote for Officers at a meeting before the April program on April 18, 2016.

The following board positions are open in 2016. All positions are for a 2 year term:

- President (must have served at least one year on the board)
- Vice President of Education
- Vice President of Exhibits
- Vice President of Finance
- Vice President of Office Management

This year the Nominating Committee is initiating a new process to encourage people to consider serving as part of this important group. Serving on the board is a great way to give back to the league and to participate in the important decisions that are so critical to our future. The board meets monthly on the second Thursday morning of the month at 9:15. There are short descriptions of each of the positions at the end of this article.

If you would like to be considered please apply by submitting the following information either in writing to the front desk or via email to staff@dupageartleague.org by :February 10, 2016.

- Name, Address, Phone and Email address
- A short statement about your background
- The name of the position you are interested in
- A short statement about why you would like to serve

The Nominating Committee will contact you to talk about your interest in February. Please consider becoming part of our leadership team. Feel free to ask any board member about serving or about anything else. The board members are listed in the back of your Activity Schedule.

PRESIDENT

Must have served at least one year on the board. Serves as official spokesperson for the League and leads the board in planning and executing all league activities. Presides at the annual meeting and all board meetings; Acts on behalf of the League in financial matters as authorized by the Board; Serves as an ex-officio member of all committees, except the nominating committee;

***Vice Presidents** generally oversee committees or individuals that handle responsibility for the details and implementation of activities.*

VICE PRESIDENT OF EDUCATION

Oversees the scheduling of classes and workshops and is responsible for producing the class schedule. Recruits and hires new teachers. Ensures teacher contracts are completed annually. Meets with teachers annually to discuss plans and concerns.

VICE PRESIDENT OF EXHIBITS

Oversees the scheduling and hanging of all gallery shows and the window displays. Responsible for exhibition guidelines, receptions, the selection of judges and awards. Oversees the Gift Shop and the Yuletide Treasures.

VICE PRESIDENT OF FINANCE

Responsible for the scholarship program, fund raising, grants and community outreach.

VICE PRESIDENT OF OFFICE MANAGEMENT

Oversees gallery staffing and staff training. Works closely with the Business Manager. Responsible for the office equipment and the purchasing of office supplies. Maintains files and documents.

BEST OF SHOW

John Moodie, Europe Cathedral, Wood

BEST THEME

Allen Tampa, Bottomless Pit, Oil

SPECIAL MERIT AWARDS

Terry Musclow, Skedaddle, Mixed

Dale Olsen, Summer Stream, Oil

Roberta Sieber, Evening in Orvieto, Oil

MERIT AWARDS

Robert Koch, Hillside Cottage, W/C

Suzanne Hetzel, From the Belfry, W/C

Dan Danielson, Medici of Florence, W/C

Sandy Wille, Some R&R, Pencil

Mary Lynn Sullivan, Valdes Caldera, Paste.

George Bruce, A View from Como, Italy, W/C

Debra Mielke, Thru the Window, Oil

Sally Sharp, Doni & JoJo, Oil Pastel

Renee Bercher, Alabama Cotton, Oil

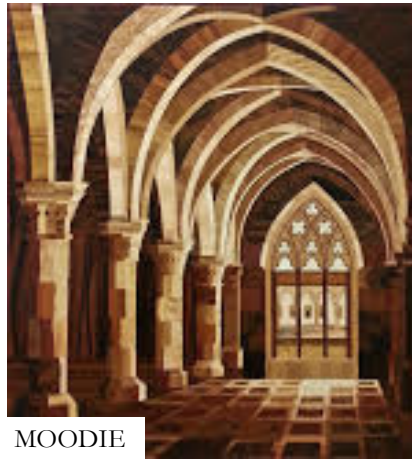
Kate McGuire, OXC Sunrise, Photo

Kay Wahlgren, Arches, W/C

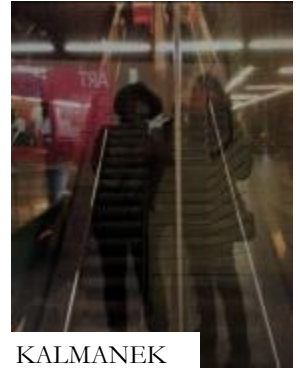
K. Leibowitz, Myers Beach Moonrise, Photo

BLICK AWARD

J. Kalmanek, Making Art At The Tate Modern Photo



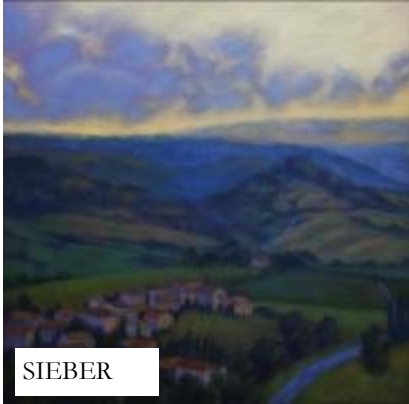
MOODIE



KALMANEK



TAMPA



SIEBER



OLSEN



MUSCLOW

**UPCOMING GALLERY I SHOW
INFORMATION****FEBRUARY : FISH, FOWL OR FUR****ENTRY: Feb. 3-4 PICK UP - Mar: 2-3**

February is pet appreciation month. Pets and animals have a special place in our hearts. Capture the beauty and love of your favorite creatures.

GALLERY II— AREA ART TEACHERS

There are currently 21 teachers participating.

Reception will be February 5th, 6:00 P.M. to 8:00 P.M.

ANNOUNCEMENTS:

Linn Eldred's paintings will be on display at Gallery 200 in West Chicago February 4th through March 3rd. Artist's Reception will be Friday, Feb 5th, 6-9 pm.

Bloomington Artists Association offering 2016 Visual Fine Arts Scholarship. For information contact Toni Forgarty, 630-220-4990, toeknee3@yahoo.com or Bev Petrosius, 630-624-9545, bpetrosius@gmail.com

The "Fly Away" Exhibit at the Norris Gallery in St. Charles includes works by Lawrence Golla January 16-February 28, 2016 Reception on Feb 28 2-4 pm. See <http://norris-culturalarts.com/> for more information.

Volunteer

The DuPage Art League is always looking for volunteers. We are always looking for additional people to staff the front desk or help out in other capacities. Email staff@dupageartleague.org if you are interested in volunteering some time. Even if you only have an hour or two, you can make a difference today!

Visit our Website:

WWW.DUPAGEARTLEAGUE.ORG

This newsletter, archives and class schedules are downloadable in PDF file format at this site.

To receive newsletter by email:

DPALNEWSLETTER@GMAIL.COM

Email your **newsletter articles** by the 15th of each month to:

DPALNEWSLETTER@GMAIL.COM

Monthly Meetings: Our monthly meetings are on the **third Monday of each month (from September through April). Social hour is 7 p.m. and programs start at 7:30 p.m.** Mark your calendars and come!



Join us on Facebook!

FEBRUARY 2016

dupageartleague

218 W Front St
Wheaton IL 60187
(630) 653-7090