



DuPage Art League School & Gallery

OCTOBER 2018 NEWSLETTER

Monday Night Open Program

October 15 | George Bruce | Oil Pastels
7PM at the Annex | 225 W. Front Street

After studying architecture and graphic design, and spending a career in the design world, George is now free to be creative without restrictions. He will demonstrate how oil pastels are an extremely creative medium. Used by themselves or mixed with other mediums, the creativity is endless. You may even be inspired to investigate oil pastels and see for yourself the versatility they offer.



Donations

If you don't have time to donate to the league, you can always donate needed supplies: paper towels, toilet paper, small containers of liquid hand soap, any size new and unused gift bags (regular and/or Christmas designs). All donations are greatly appreciated.



Workshop Corner

The watercolor workshop Peggy Macnamara taught was inspiring and fun in only a way Peggy can provide. Her knowledge and enthusiasm for the watercolor medium is contagious. She brought wonderful subjects to use as models including a Great Horned Owl, pheasants, a blue jay, and a duck (all taxidermied from the Field Museum collection). As one member who attended said "it was a high quality workshop as Peggy was so willing to share her knowledge of drawing and painting by bringing in her series of work to show accurate drawing methods, transparent color layering, and breaking down composition and color theory into easy terms."

Join us for our next workshop in Oil Pastels with George Shipperley. October 27, from 9-4PM. Fee \$110.
Call 630.653.7090.



Yuletide Treasures 2018

Sherry Theilgaard | 630.858.9224
sherry-mouse85@comcast.net

Yvonne Thompson | 630.966.9616
dupage_art_league@sbcglobal.net

Liesl Mann | vtconnection@gmail.com

Criteria packages are at the front desk.

Drop off dates Tuesday, October 23-Saturday, October 27 until 2PM; Thursday, October 25 until 7PM.
You must drop off during these 5 days to secure display space in the show.

Second drop off date is Wednesday, November 28, 10AM- 4PM. You can only drop off extra work in on that day.

If you sell work in the show and have been called by Yvonne to bring in more, you may drop off those replacements in the Gift Shop back room anytime. Work will be displayed when space becomes available.

Installation is Monday, October 29. **No work received this day.** The show officially opens Wednesday, October 31.

Pre-Entry Meeting

If you missed our first meeting in August, please attend the pre-entry meeting on Friday, October 5, from 3-5PM at the annex. This is especially important if this is your first time exhibiting in Yuletide Treasures.

You will be able to sign up for your required hours of work, pick up your Criteria Package, order your barcodes and ask all the questions you want! If you are working on something and need approval or help, bring that along too. If you can't make this meeting you must call Yvonne before October 10.

Barcodes - Very Important

The Criteria Package includes a Barcode Request Form. These must be completed and returned to the front desk at DPAL by October 12. Your ordered barcodes will be ready for pick up on Wednesday October 17.

Yvonne can only print barcodes now when the front desk is closed and the computer is not being used, hence the new ruling.

Demo Artists

This year, we would like to have a few artisans on Saturdays in December to demo in the gallery. You must be exhibiting in Yuletide Treasures. If you are interested, please contact Yvonne with a description of what work you will demo.

And one final note - if you have items in the gift shop, they will account for the maximums listed in the Yuletide Treasures criteria. If you remove your Gift Shop stock, you may bring new quantities for Yuletide. No stock for the gift shop will be accepted now until January 2019.

Classified Ads

These items have been donated and all the proceeds will benefit DPAL. Please ask at the front desk to see these.

- 1 very large handed zippered portfolio carrier, not the greatest of shape, but functional \$5
- 1 tracing Projector, suitable for projecting image onto a canvas, in box \$10

Since we are preparing for Yuletide Treasures, we are not accepting any donations of supplies until the New Year. Until then, we suggest taking supplies to Scarce or The People's Resource Center.

Gallery 1 July Awards

Best of Show

Beverly Miotke, "My Road is Gold", Oil Pastel

Best Theme

Valerie Lorimer, "The Yellow Brick Road Gets an Overhaul", Mixed

Special Merit Awards

Nancy McGuire, "Yellow Brick Road", Acrylic

Valentina Kostic, "Road, Repeated", Mixed

Barbara Holmes, "Road to Happiness", Watercolor

Merit Awards

Shawn Russell, "Pangolins", Ink on Paper

Peter Hagerty, "Old Man in Hat", Acrylic

Bernard Mensah, "Love & Friendship", Acrylic

Peter Sausen, "Off the Beaten Path", Acrylic

Peter Grass, "Changing the Sheets", Digital Photo, Triptych

Char Desmond, "The Mountains are Calling", Acrylic

Yvonne Buckley, "Prairie Path Friends", Colored Pencil

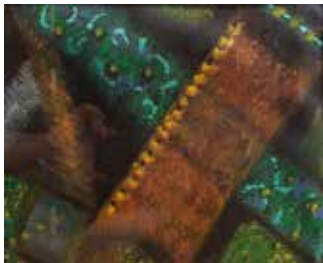
Robert Pennor, "Sunset in the Canyon", Acrylic

Jacqueline DeClute, "Puppy Love", Watercolor

Terry Niccoli, "One Little Fishy", Pastel

David Reichert, "Sunflower Sylph", Acrylic

Lyn Tietz, "Golden Pavilion", Oil



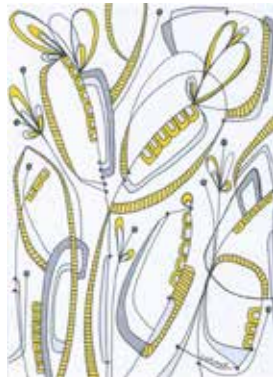
Beverly Miotke, "My Road is Gold"



Nancy McGuire, "Yellow Brick Road"



Valentina Kostic, "Road, Repeated"



Valerie Lorimer, "The Yellow Brick Road Gets an Overhaul"



Barbara Holmes, "Road to Happiness"

Board Notes



• Our Treasurer, Kandi Husarik, reported that Summer Class Session C was disappointing with a 42% drop in revenues.

Undoubtedly, the street repairs were a big factor. Nevertheless as of 8/31/18 our net income was positive. Workshops are doing very well with George Shipperley's yet to come. Overall we are in solid shape.

• We have applied for a grant from the DuPage Foundation to update our website. They will announce grant recipients in mid-November. Fingers crossed.

• Chuck Showalter, VP of Building & Grounds, presented several proposals for repairs to the front of the building and the front door. The board authorized the repair to the door because it needs to be done immediately and asked Chuck to get additional bids for the front of the building. Some of the damage on the front was caused by the city when they did the sidewalk and we don't know yet what we might be able to recoup from them.

• Mary Goebel requested that the Plein Aire Artists be able to hold a reception and show their art at the league on Sunday, Oct. 21 and the board enthusiastically approved the event.

• The board approved a class discount for the person who puts the schedule together (half-price on one class 3 times a year) and for the person who coordinates all the workshops (half-price on one class 2 times a year). Board members and staffers already receive discounts.

• A meeting for possible participants in Yuletide Treasures went very well according to Yvonne Thompson. She is planning a second one on Oct. 5 from 3 to PM.

Members in the News

Diana Mitchell has a painting in the juried "Art of Illinois" show at Gallery Seven in Lockport, IL. She also has a painting, "Old Soldier," juried into the Chicago Pastel Painter's biennial show "Strokin' VII." Chicago Pastel Painter's show is at the McCord Gallery and Cultural Center in Palos Park. Both \ exhibitions run the month of October.

Robert Koch was awarded First Place in Watercolor 2018 at the Professional Artist Art Show at the Illinois State Fair in Springfield, Illinois. This year he displayed that painting at Norris Gallery in St. Charles, IL. is award winning paintings will be on exhibit at Art in the Barn Show in Barrington, IL, September 22 & 23, 2018. Also in 2018 he exhibited in the Louisiana Watercolor Society Society's 48th Annual International Exhibition. It was their 50th Anniversary Show. His studio/gallery is open by appointment only. Please call 630.664.7011.

Ellen Rottsolek will be exhibiting a selection of pastel paintings at the Glen Ellyn Library through the month of October. A reception is scheduled for Sunday, October 14 from 2-3:30PM. Please join us.

Please welcome these new or returning members

Rosemary Arellano	27W186 Fleming Drive, Winfield, IL 60190	331-625-2009	ARE
Nancy Bacheller	126 Country Club Dr, Bloomingdale, IL 60108	630-363-1812	BAN
Donna Bowers	2 Wheaton Ct, #611, Wheaton, IL 60187	630-480-0001	BOD
Erica Carlson	631 Carolyn Dr, Glen Ellyn, IL 60137	630-841-7553	CAE
George Ceffalio	1N210 Main St, Glen Ellyn, IL 60137	630-440-6684	CEF
Roberta Cencig	723 W Charles Ct, Addison, IL 60101	847-848-3482	CER
Hao Chang	6809 Clarendon Hills Road, Darien, IL 60561	630-864-1660	CHH
Carol Connerty	1111 East Adams St, Lombard, IL 60148	630-620-4854	CCO
Diane Danese	566 Ridge Ave, Elk Grove Village, IL 60007	847-952-0504	DDN
Beth DeSanto	7N 021 Route 25, Elgin, IL 60120	847-636-1735	DEB
Char Desmond	856 Longmeadow Dr, Carol Stream, IL 60188	630-518-1420	DES
Anna Duff	1836 Suffolk Ave, Westchester, IL 60154	708-870-5596	DUA
Martha Evans	107 E. 14th St, Lombard, IL 60148	630-932-1726	EVA
Cheryl Fitzpatrick	S1946 Whitetail Dr, Reedsburg, WI 53959	630-690-1820	FCH
Catherine Goodwin	27W212 Chartwell Dr, Winfield, IL 60190	630-690-3040	OOD
Julya Hodge	111 W Ash #A, Lombard, IL 60148	801-674-5218	HOJ
Barbara Holmes	30 W 424 Arbor Lane, West Chicago, IL 60185	630-258-9710	HLB
Jan Jones	570 Crescent Blvd #301, Glen Ellyn, IL 60137	630-267-0175	JOJ
Denise Kolden	22W681 Tamarack Dr, Glen Ellyn, IL 60137	262-488-4630	KOD
Valentina Kostic	987 Huntleigh Dr, Naperville, IL 60540	630-357-1557	KOV
Misha Kostic	987 Huntleigh Dr, Naperville, IL 60540	630-357-1557	KOM
Julua Lamb	848 S. Chatham, Elmhurst, IL 60126	630-832-8918	LAJ
Karen Landry	3371 Ravinia Circle, Aurora, IL 60504	630-670-1459	LAK
Ann Lawrenz	1475 Johnstown Lane, Unit B, Wheaton, IL 60189	630-849-8086	LAA
Perry Lipham	6 Wheaton Center, Apt. 209, Wheaton, IL 60187	630-666-1998	LIR
Peg Major	3S 315 Blackthorn Lane, Warrenville, IL 60555	630-532-4792	MAP
Lee Mandel	415 W. Jackson, Naperville, IL 60540	630-973 9400	MLE
Vicki McGrath	3173 Venard Rd, Downers Grove, IL 60515	708-217-1991	MCV
Mary O'Connor	1075 Hermes Ave, Lombard, IL 60439		OCM
Jeanne Ondyak	2401 Riverwoods, Naperville, IL 60565	630-254-9044	OND
Lauren Peterson	101 S Elizabeth St, Lombard, IL 60148	630-308-9798	PEL
Donna Pilkington	1N 590 Burr Oak Rd, North Woods, IL 60185	630-876-8215	PID
David Reichert	1201 Koster Ct, Geneva, IL 60134	630-659-8373	DFR
Gary Riley	208 Richard Rd, Naperville, IL 60540	630-631-3416	RIG
Leeanne Burrough	208 Richard Rd, Naperville, IL 60540	630-631-3416	BUL
Fuad Saba	436 E. Hillside Rd, Naperville, IL 60540	630-567-1380	SAF
Suzanne Siegler	10S610 S. Garfield Ave, Burr Ridge, IL 60527	630-986-0456,	SIS
Jodi Stapleton	2155 Stirrup Lane, Wheaton, IL 60189	630-881-6422	SJO
Nancy Staszak	7812 Westview Lane, Woodridge, IL 60516	630-484-6457	STN
Kay Strayer	593 Midway Park, Glen Ellyn, IL 60137	630-248-0259	SKK
Sarah Tobias	3309 Meadow Trail West, DeKalb, IL 60115	815-739-4501	TOS
Barbara Torrence	121 N Cross St, Apt 142, Wheaton, IL 60187	248-703-3969	TOB

Muse With A View

Composition by Mary Dorrell, DPAL,
VP Publicity and Instructor | Lemon Tea, Oil, 12x12

The crucial stage of any artwork is good composition. A sound understanding of what is a good composition and how to achieve it will be the biggest factor in achieving successful drawings and paintings. Creating strong compositions is not just a matter of having 'a good eye,' it takes time and practice.



Let's review a few tools, tips and rules that will help to guide you in creating strong compositions in your own artwork. Your aim is to create a pleasing design by following the basic **Principles of Design**:

1. Unity = all of the elements working together to support the design as a whole. Examples:
 - a. *Bathers at Asnières* - Georges Seurat - unity of palate and style (pointillism)
 - b. *American Gothic* - Grant Wood - unity in repeated pitchfork shape
2. Balance = distribution of visual weight in a design.

Examples:

- a. *Last Supper* - DaVinci - both sides are not the same but you see a balance of color- good use of rule of thirds
 - b. *Woman Holding a Balance* - Johannes Vermeer - asymmetrical balance
3. Variety = complement to unity and creates visual interest. (Perfection is boring, we are looking for a break in the pattern, something interesting) Example:
 - a. *Irises* - V. Van Gogh - break in the patter with a white iris

Design Reminders:

1. Point of Interest | What is the Story
2. Movement | Guide the eye around the painting
3. Placement, avoid Kissing | watch for the awkward overlap
4. Positive and Negative Space | pay attention to the negative areas
5. Shape and Pattern | learn to see the underlying patterns
6. Shadow | Use your lights and darks, don't be afraid of being too dark.
7. Color | high or low saturation conveys different feelings
8. Perspective | know how to use 1 and 2 point perspective well

You're Invited

Members of the league, friends, family and anyone interested in seeing what those "plein aire people" are up to, are invited to come and see the work produced over the summer season.

The Friday Plein Aire group will host a reception and display of work from our various meet-up locations. Please join us at the League on Sunday, October 21 from 1-3PM. Munchies and treats will also be provided. We hope to see you there!

Food for Thought

The artist is a receptacle for emotions that come from all over the place: from the sky, from the earth, from a scrap of paper, from a passing shape, from a spider's web.

- Pablo Picasso

Do the difficult things while they are easy and do the great things while they are small. A journey of a thousand miles must begin with a single step.

- Lao Tzu

Art is what you can get away with.

- Andy Warhol

DPAL Board 2017-2018

President: Kay Wahlgren
Secretary: Sally Hines
Treasurer: Kandice Husarik
VP Activities: Jennifer Schwab & Sue Thomas
VP Building & Grounds: Chuck Showalter
VP Education: Nancy Anderson,
Workshops - Jen Schwab
VP Exhibits: Sue Jurkus/Marguerite Paris
VP Finance: Dan Anderson
VP Membership: Yvonne Thompson
VP Office Management: Ann Johnson
VP Publicity & Promotions: Mary Dorrell
President Emeritus: Diana Mitchell

Yuletide Treasures: Sherry Theilgaard, Liesl Mann,
Yvonne Thompson
Newsletter: Valerie Lorimer | vlorimer@yahoo.com

NEWSLETTERS/E-BLAST SUBMITTALS

vlorimer@yahoo.com

To submit email blast information and newsletter articles, send your information to: vlorimer@yahoo.com

Acceptable formats for submissions include Word documents or PDF files for text and 300dpi JPG for images). Please proof/verify your information before submitting. **Use minimal formatting; send photos, flyers, images as attachments to your email (not as part of the email body).**

Submissions are due by the 15th of the month.



Ready for Those Long Winter Days?

Jazz them up. Learn a new medium or improve techniques with an **Oil Pastel Workshop with George Shipperley on Saturday, October 27.**


All levels welcome!

Hours: 9AM-4PM | Fee: \$110

George's workshop will include learning various techniques working with oil pastels and how to improve composition, color harmony and proper presentation of finished works. George will work individually with each artist to better focus on their needs and there will be a class critique at the end of day.

A supply list is available at the front desk.

To register, please call 630.653.7090 during office hours.

October 2018 Newsletter | Join us on Facebook 

218 W. Front Street
Wheaton, IL 60187
630.653.7090
dupageartleague.org

dupageartleague